

Replacing the white timing belt on the length stop.

1. Push the Emergency stop button in and unplug the power cable and the encoder cable going to the length motor. Be sure to remove all cable ties as the entire motor mount plate will be removed.
2. Slide the length stop by hand up the aluminum rail so it is near the motor end.
3. Remove the black striker plate.
4. Remove the 2 black motor gear covers.
5. Loosen Alan bolts A (fig1) then back hex head adjustment bolt B (fig 2) to release tension off belt. If necessary you can remove the tensioning device held in place by bolt C (fig 1)

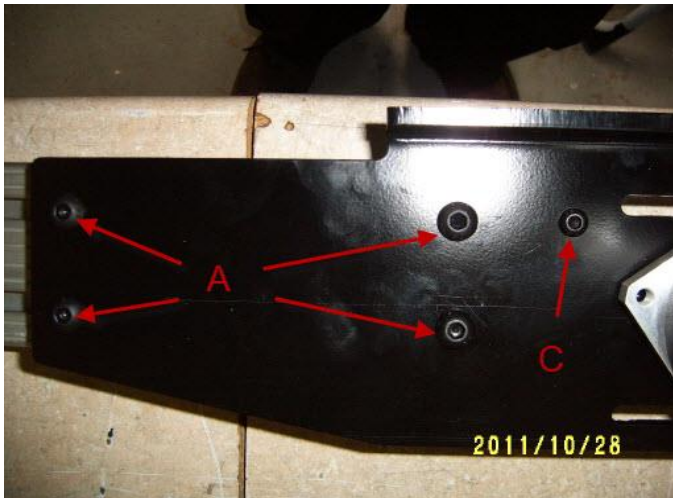


Fig1.



Fig 2.

6. Loosen the bolts on the 4 closest brackets to the motor this will allow you to push the aluminum fence away from the conveyors and get underneath the slider to remove the bolts for the belt clamp/clamps and the cable. (Fig 3 and 4)

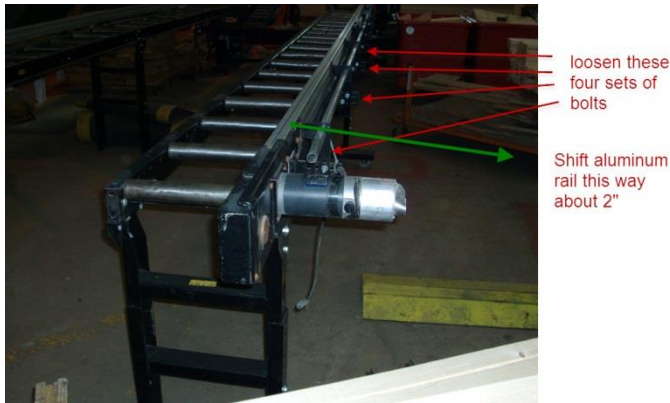


Fig 3.

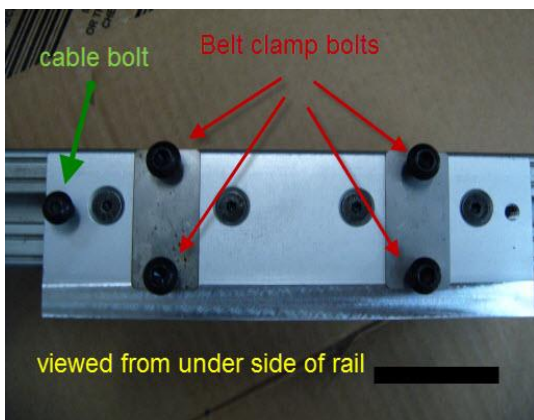


Fig 4.

7. Slide the carriage and the complete motor mount bracket off the end of the rail.
8. Remove the idler pulley cover from the saw end of the rail, then remove the belt and cable from the rail.
9. The belt will need to have 2 holes drilled in it, to allow the bolts to go through the sandwich plate that holds the belt and cable together. Use the sandwich plate as a stencil for these holes. Be careful while drilling the belt as it will tend to catch on the drill bit.
10. Bolt cable and belt back together, then feed the cable back through the rail from the motor end, pass over the idler pulley and feed the belt in to the rail from the motor end.

11. Slide carriage back on to rail, then slide the motor mount plate back on
12. Bolt the cable and belt back to the carriage then straighten the rail back up and tighten the bracket bolts back up (if necessary use a string line to re set the aluminum fence)
13. Make sure the white belt is over the small gear properly then re insert the tensioning device (bolt C) and use bolt B to bring the tension back on the belt.
14. Tighten A bolts and replace 2 black covers and striker plate.